

PART OF N. 1/2 SEC. 9 T.6N. R.1W. S.L.B.&M.
RON-CLARE VILLAGE NO.5
LOTS 494-503 & 526-547

IN OGDEN CITY

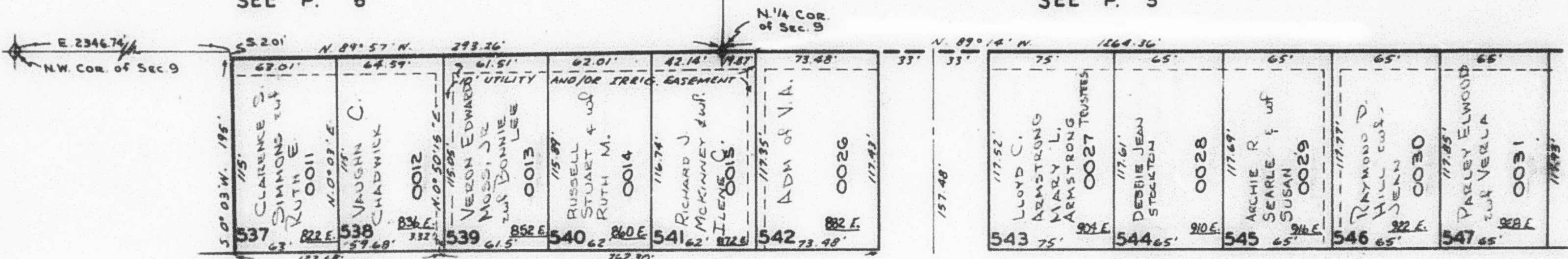
TAXING UNITS: 25

SCALE 1" = 60'

PREFIX: 11-069

SEE P. 6

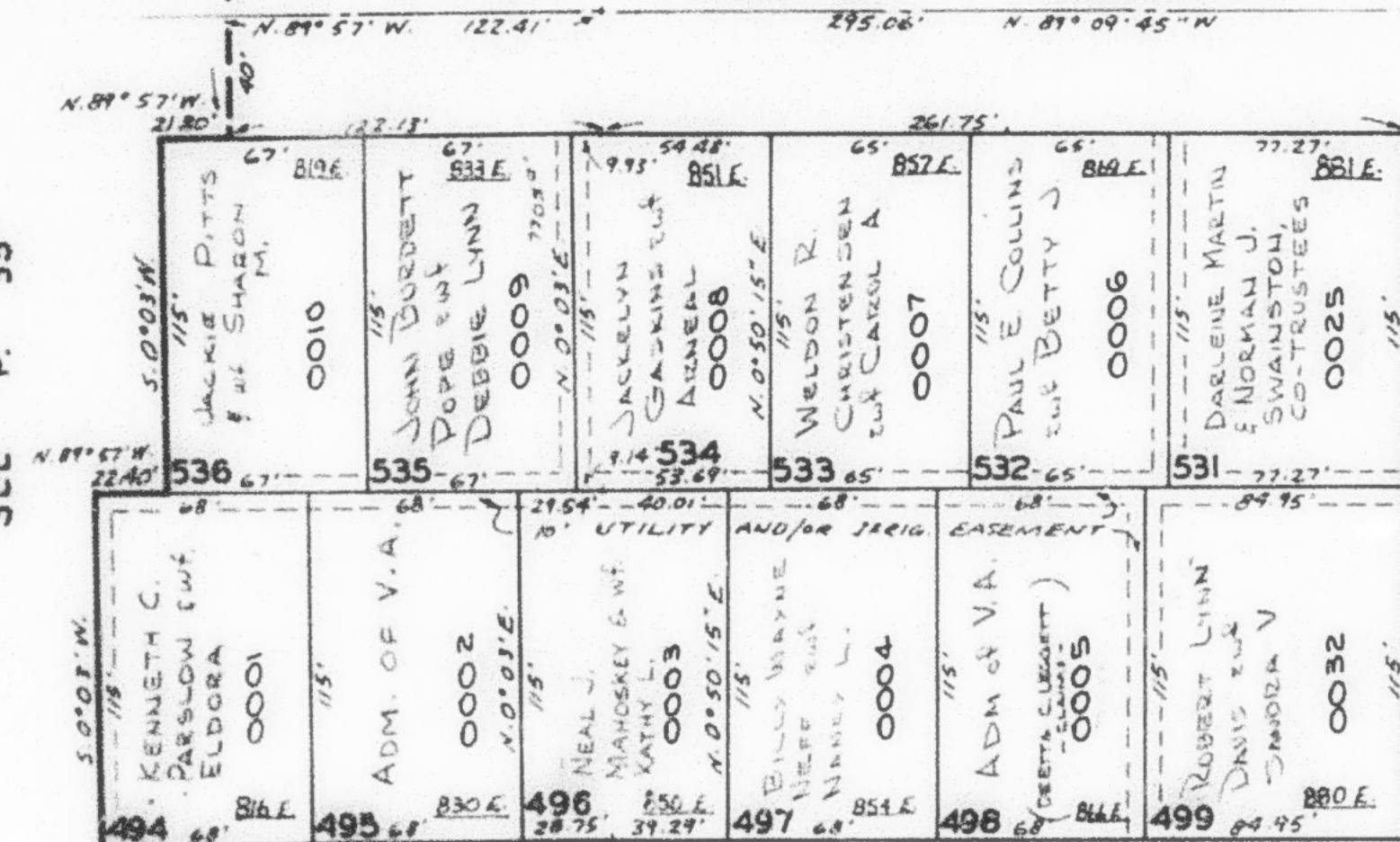
SEE P. 5



1100 NORTH STREET

1100 NORTH STREET

SEE P. 55



1050 NORTH STREET

1050 NORTH STREET

QUINCY AVE.

GRAMERCY

925 EAST

SEE P. 68

SEE P. 70